

# EVALUATION CRITERIA FOR HORIZON EUROPE PROPOSALS

All Horizon Europe proposals that have passed admissibility and eligibility checks are evaluated based on three criteria specifically defined for the purpose:



1

## Excellence

Generally refers to the clarity of the project's objectives and the soundness of its methodology.

2

## Impact

Generally refers to the sustainability and the quality of the measures to maximize expected results and impact.

3

## Implementation

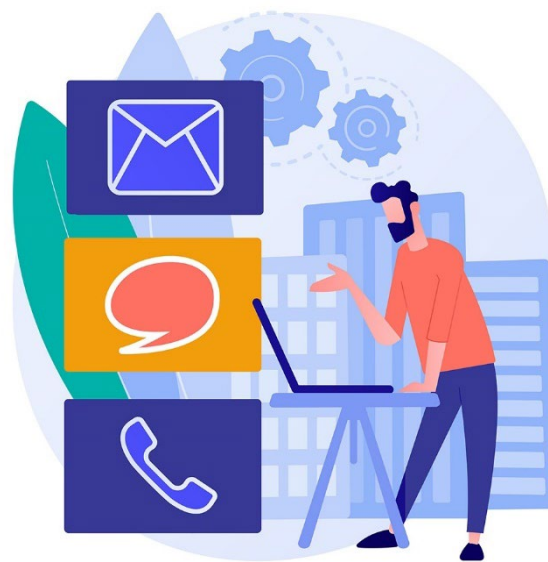
Quality and Efficiency of Implementation, which refers to the quality and the soundness of the work plan and the capacity of the consortium where applicable.

The criteria and their weight in the evaluation is adapted for each type of action, and the requirements are outlined in the text of each topic. It is therefore important to pay attention to the individual requirements of each topic and adapt your proposal to address the criteria accordingly.

## More information

Take a look to more information and a detailed rundown of how each criterion is adapted based on action type

Don't forget to consult your NCPs to make sure that your proposal sufficiently addresses the criteria as laid out in the individual topic!



### Stay in touch with us

<https://ncp.brussels/>

[info@ncp.brussels](mailto:info@ncp.brussels)

[https://twitter.com/NCP\\_Brussels](https://twitter.com/NCP_Brussels)

<https://www.linkedin.com/in/ncpbrussels/>